

揭西县南山革命烈士纪念亭划定保护宗地图

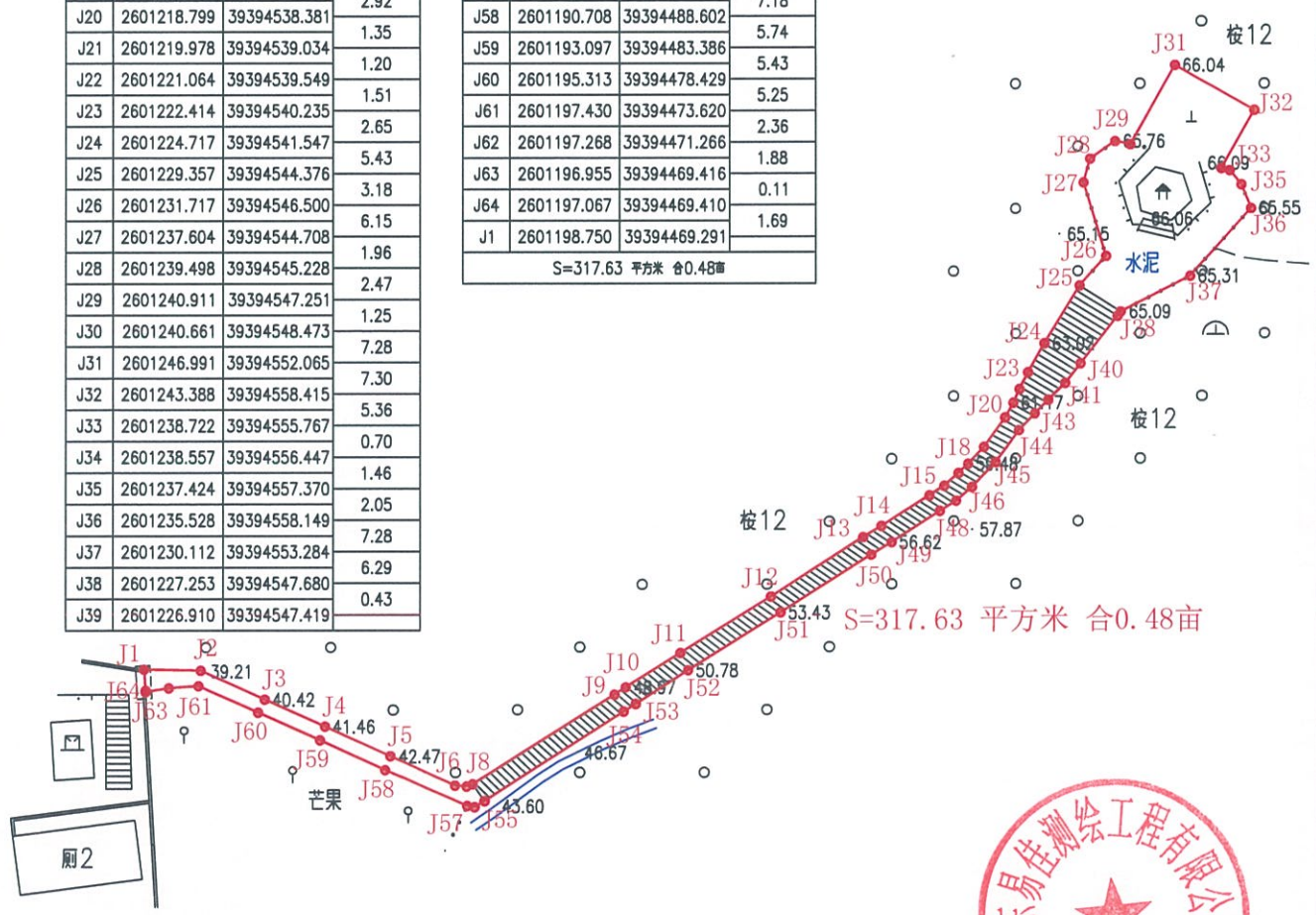
界址点坐标表

点号	X	Y	边长
J1	2601198.750	39394469.291	4.52
J2	2601198.669	39394473.813	5.64
J3	2601196.352	39394478.951	5.29
J4	2601194.193	39394483.777	5.75
J5	2601191.819	39394489.012	5.71
J6	2601189.457	39394494.212	0.94
J7	2601189.387	39394495.149	0.52
J8	2601189.574	39394495.638	13.44
J9	2601196.716	39394507.027	1.08
J10	2601197.304	39394507.930	5.17
J11	2601200.044	39394512.310	8.52
J12	2601204.522	39394519.558	8.77
J13	2601209.261	39394526.936	1.70
J14	2601210.141	39394528.388	4.59
J15	2601212.584	39394532.272	1.42
J16	2601213.349	39394533.474	1.53
J17	2601214.356	39394534.623	1.07
J18	2601215.096	39394535.394	1.85
J19	2601216.438	39394536.668	2.92
J20	2601218.799	39394538.381	1.35
J21	2601219.978	39394539.034	1.20
J22	2601221.064	39394539.549	1.51
J23	2601222.414	39394540.235	2.65
J24	2601224.717	39394541.547	5.43
J25	2601229.357	39394544.376	3.18
J26	2601231.717	39394546.500	6.15
J27	2601237.604	39394544.708	1.96
J28	2601239.498	39394545.228	2.47
J29	2601240.911	39394547.251	1.25
J30	2601240.661	39394548.473	7.28
J31	2601246.991	39394552.065	7.30
J32	2601243.388	39394558.415	5.36
J33	2601238.722	39394555.767	0.70
J34	2601238.557	39394556.447	1.46
J35	2601237.424	39394557.370	2.05
J36	2601235.528	39394558.149	7.28
J37	2601230.112	39394553.284	6.29
J38	2601227.253	39394547.680	0.43
J39	2601226.910	39394547.419	

界址点坐标表

点号	X	Y	边长
J39	2601226.910	39394547.419	4.82
J40	2601223.116	39394544.453	2.00
J41	2601221.545	39394543.215	1.92
J42	2601220.199	39394541.848	1.52
J43	2601219.120	39394540.779	1.86
J44	2601217.775	39394539.500	3.18
J45	2601215.222	39394537.608	2.74
J46	2601213.246	39394535.707	1.69
J47	2601212.140	39394534.426	1.53
J48	2601211.336	39394533.122	4.62
J49	2601208.852	39394529.229	1.94
J50	2601207.849	39394527.571	8.59
J51	2601203.259	39394520.314	8.70
J52	2601198.654	39394512.937	4.99
J53	2601195.968	39394508.730	1.14
J54	2601195.357	39394507.773	13.27
J55	2601188.224	39394496.586	0.92
J56	2601187.741	39394495.803	0.62
J57	2601187.840	39394495.189	7.18
J58	2601190.708	39394488.602	5.74
J59	2601193.097	39394483.386	5.43
J60	2601195.313	39394478.429	5.25
J61	2601197.430	39394473.620	2.36
J62	2601197.268	39394471.266	1.88
J63	2601196.955	39394469.416	0.11
J64	2601197.067	39394469.410	1.69
J1	2601198.750	39394469.291	

S=317.63 平方米 合0.48亩



广东易佳测绘工程有限公司



2024年11月制图。
2000国家大地坐标系。

绘图员：李锐聪
检查员：郑会坤